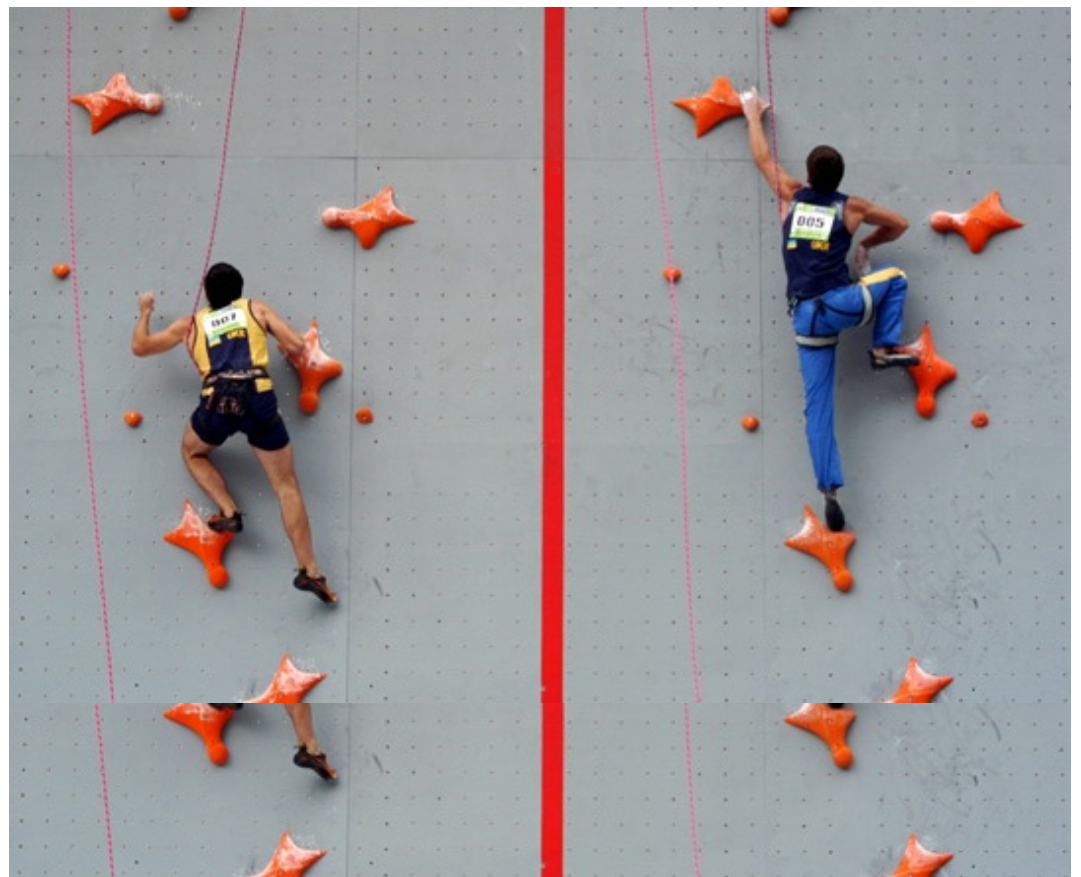


SPEED CLIMBING

ALGE-TIMING



Manual

Important Information

General

Before using your **ALGE-TIMING** device read the complete manual carefully. It is part of the device and contains important information about installation, safety and its intended use. This manual cannot cover all conceivable applications. For further information or in case of problems that are mentioned not at all or not sufficiently detailed, please contact your **ALGE-TIMING** representative. You can find contact details on our homepage www.alge-timing.com

Safety

Apart from the information of this manual all general safety and accident prevention regulations of the legislator must be taken into account.

The device must only be used by trained persons. The setting-up and installation must only be executed according to the manufacturer's data.

Intended Use

The device must only be used for its intended applications. Technical modifications and any misuse are prohibited because of the risks involved! **ALGE-TIMING** is not liable for damages that are caused by improper use or incorrect operation.

Power supply

The stated voltage on the type plate must correspond to voltage of the power source. Check all connections and plugs before usage. Damaged connection wires must be replaced immediately by an authorized electrician. The device must only be connected to an electric supply that has been installed by an electrician according to IEC 60364-1. Never touch the mains plug with wet hands! Never touch live parts!

Cleaning

Please clean the outside of the device only with a smooth cloth. Detergents can cause damage. Never submerge in water, never open or clean with wet cloth. The cleaning must not be carried out by hose or high-pressure (risk of short circuits or other damage).

Liability Limitations

All technical information, data and information for installation and operation correspond to the latest status at time of printing and are made in all conscience considering our past experience and knowledge. Information, pictures and description do not entitle to base any claims. The manufacturer is not liable for damage due to failure to observe the manual, improper use, incorrect repairs, technical modifications, use of unauthorized spare parts. Translations are made in all conscience. We assume no liability for translation mistakes, even if the translation is carried out by us or on our behalf.

Disposal

If a label is placed on the device showing a crossed out dustbin on wheels (see drawing), the European directive 2002/96/EG applies for this device.

Please get informed about the applicable regulations for separate collection of electrical and electronical waste in your country and do not dispose of the old devices as household waste. Correct disposal of old equipment protects the environment and humans against negative consequences!



Copyright by **ALGE-TIMING GmbH**

All rights reserved. Any duplication, either in full or in part, requires the prior written consent of the copyright holder.

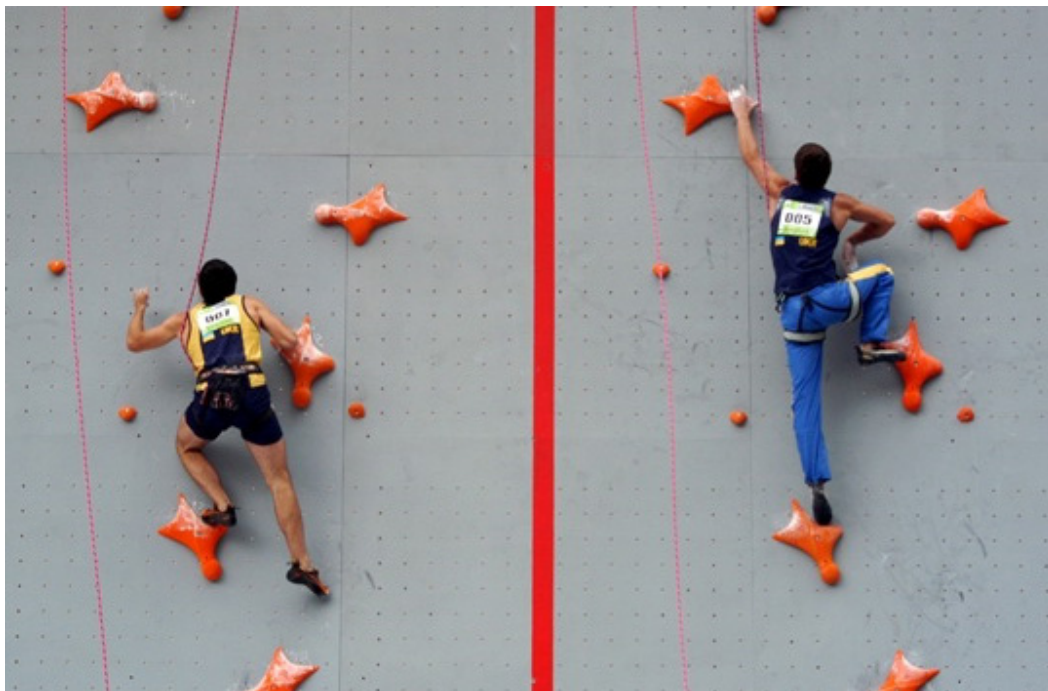
Table of Contents

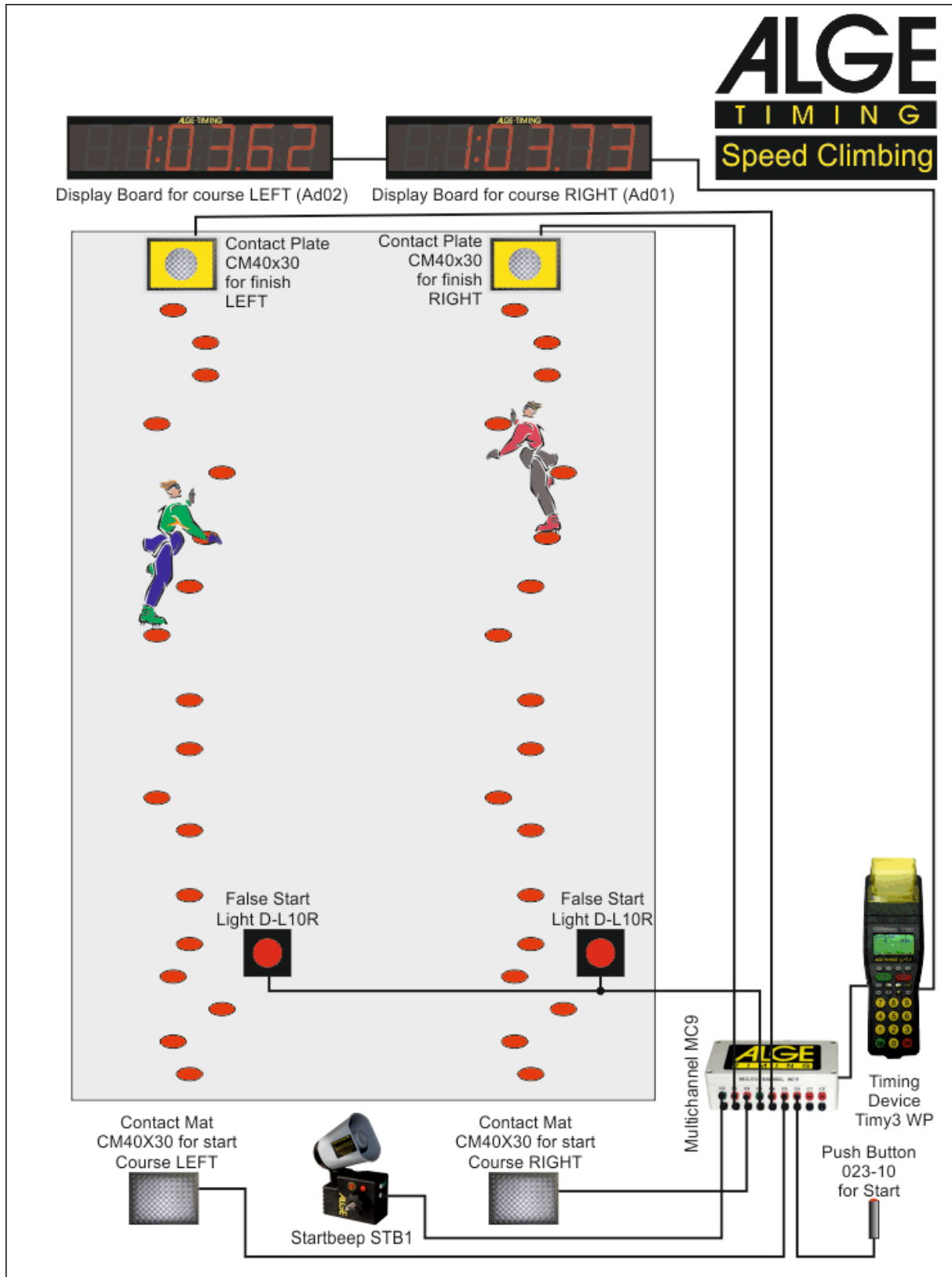
1	General.....	4
2	Connecting the System.....	6
2.1	Connect Timy2 PXE with Power Supply PS12A	6
2.2	Connect Timy2 PXE with Multichannel MC9	6
2.3	Connect Startbeep STB1 with False Start System Multichannel MC9.....	6
2.4	Connect Push Button 023-10	6
2.5	Connect Contact Mats CM40x30 with Multichannel MC9.....	7
2.6	Connect Display Board D-LINE with Timy2 PXE for Timing	8
3	Adjustment of Devices.....	9
3.1	Adjust the Timy2 or Timy3	9
3.2	Adjusting the Startbeep STB1	9
3.3	Display Board D-LINE.....	10
4	Operation of the System	10

1 General

For speed climbing you need the following components:

- 1 x Timy2 PXE-S for timing
- 1 x Multichannel MC9 for timing
- 1 x Startbeep STB1 for start signal
- 1 x Push Button 023-10 to start the timing (delay between 0.5 and 1.5 sec)
- 1 x Contact Mat CM40x30 for blue course start
- 1 x Contact Mat CM40x30 for green course start
- 1 x Contact Mat CM40x30 for blue course finish
- 1 x Contact Mat CM40x30 for green course finish
- 1 x Display Board D-LINE150-O-6-E0 to show time of blue course
- 1 x Display Board D-LINE150-O-6-E0 to show time of green course
- 2 x False Start Light D-L1R to show a false start for each course





2 Connecting the System

2.1 Connect Timy2 PXE with Power Supply PS12A

Before operation please fully charge the Timy2 PXE. Connect a power supply PS12A with each Timy and the mains.



2.2 Connect Timy2 PXE with Multichannel MC9

Connect the Timy2 PXE with the Multichannel MC9 cable. It is a D-Sub 25-pin plug. Do this for both Timy.



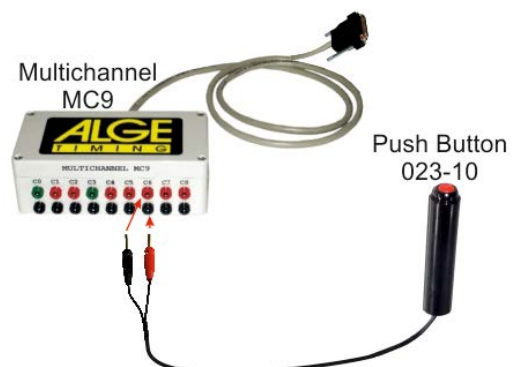
2.3 Connect Startbeep STB1 with False Start System Multichannel MC9

Connect the Startbeep STB1 with the Multichannel MC9 of the false start system. Use the white banana sockets of the Startbeep STB1 (polarity does not matter) and the green and black banana socket of the Multichannel MC9 (Channel 0). Use a cable with banana plugs for this.



2.4 Connect Push Button 023-10

Connect the push button 023-02 at the Multichannel MC9. The channel that you have to use is c6. If you press the start button the start horn (STB1) will be activated with a delay between 0.5 and 1.5 sec. This delay is random and a IFSC rule.



2.5 Connect Contact Mats CM40x30 with Multichannel MC9

The Contact Mats CM40x30 for the start have to be connected with the Multichannel MC9 which is connected with the false start Timy2.

Start Contact Mats CM40x30:

- Connect finish contact mat of left course with MC9 channel 2
- Connect finish contact mat of right course with MC9 channel 5



Contact Mat CM40x30 for start

Finish Contact Mats CM40x30:

- Connect finish contact mat of left course with MC9 channel 1
- Connect finish contact mat of right course with MC9 channel 4



Contact Mat CM40x30 for finish

Timy2 PXE: Program „SPEED CLIMBING“

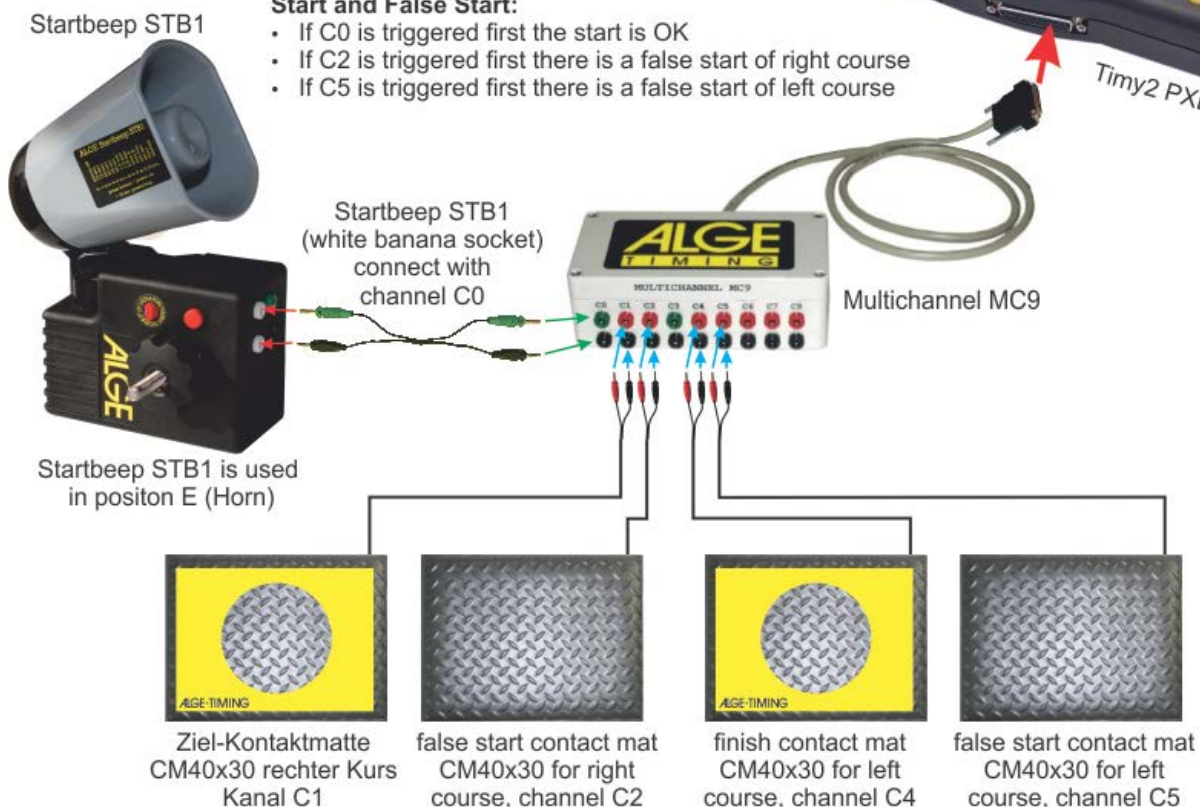
- C0 = start impulse of Startbeep
- C2 = false start mat of right course
- C5 = false start mat of left course
- C1 = finish mat of right course
- C4 = finish mat of left course

Start and False Start:

- If C0 is triggered first the start is OK
- If C2 is triggered first there is a false start of right course
- If C5 is triggered first there is a false start of left course

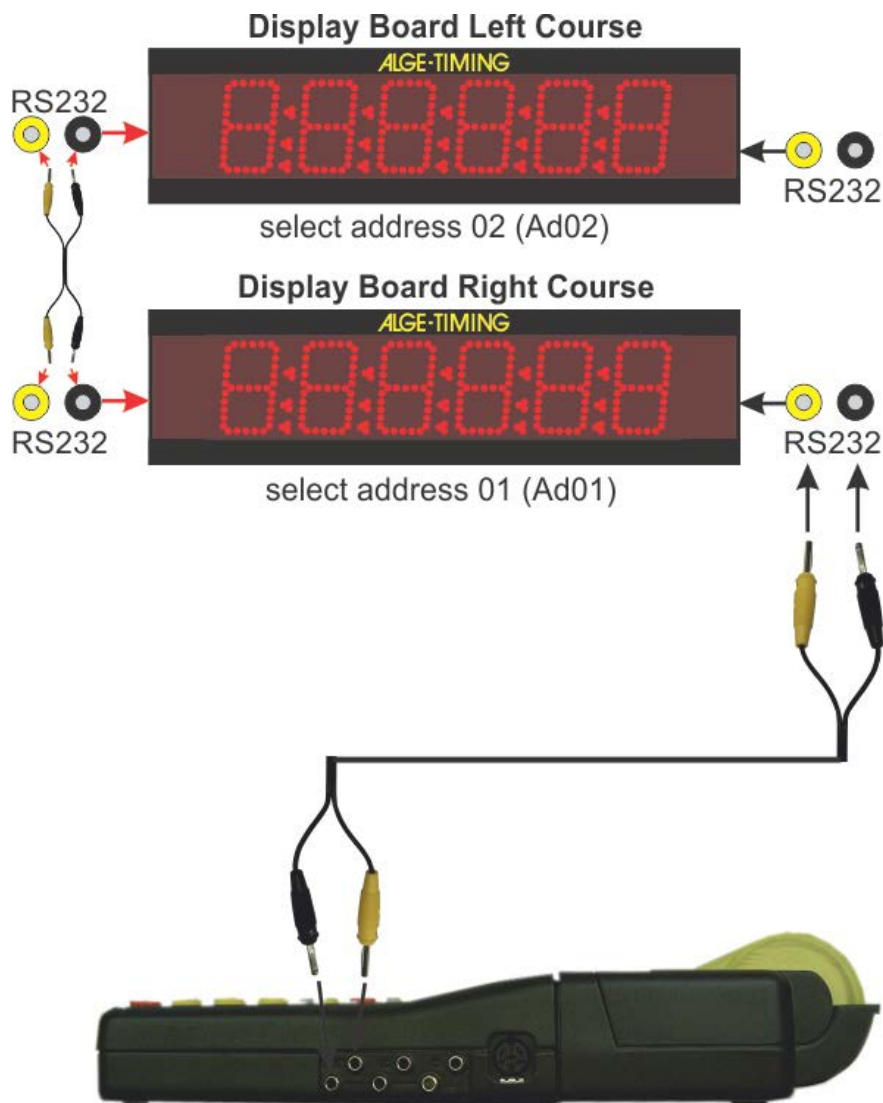


Timy2 PXE



2.6 Connect Display Board D-LINE with Timy2 PXE for Timing

When you connect the display boards to the Timy2 PXE that you use for timing, you have to make sure that you configure the D-LINE correctly. The display used for the left course has to be set on address 1 (Ad01) and the one for the right course on address 2 (Ad02).



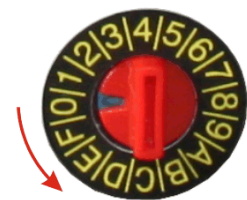
3 Adjustment of Devices

3.1 Adjust the Timy2 or Timy3

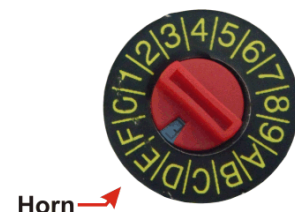
- Switch on Timy
- Select program SPEED-CLIMBING with arrow button
- Confirm with <OK> (green or red)
- Clear the memory with key <CLR> and <OK> (green or red)
- Adjust the time of day and press <OK> (green or red)
- Adjust the date and press <OK> (green or red)
- Start the time of day by pressing <START> or effect synchronized start with other timing devices
- Press <MENU>, select with arrow keys "SPEED CLIMBING" and press <OK> (green or red)
- Select "PARCOUR" with arrow key and confirm with <OK> (green or red)
- Now select with arrow key how you want to indicate your parcours:
 - LEFT and RIGHT
 - BLUE and RED
 - BLUE and GREEN
- Confirm the course identification by pressing <OK> (green or red)
- Press arrow key back so you can select with the down arrow key "FALSE START" and confirm with <OK> (green or red)
- Select if you have a false start measurement or not by moving the cursor to "NO" or "YES" and confirm with <OK> (green or red). If you have contact mats at the ground you can measure the false start.
- Select "RAND. START DELAY" on <YES>
- Press <MENU>-key to enter the timing mode

3.2 Adjusting the Startbeep STB1

Switch the Startbeep on the position E (Horn). If you press the red button or the connected push button the Startbeep honks.



Switch rotation switch from 0 (off) to E (horn)



3.3 Display Board D-LINE

It is necessary to have two display boards. One shows the time of the green course, the other one that of the blue course. In order to show correct times on each of the display boards you have to allocate each one to an address.

Parameter list

The parameter names are clear as to show the user what can be adjusted. On the side of the display you can find a short explanation.

Ad Address-Setting [A3] (A)

To use more than one D-LINE on an addressed protocol, you have to define the address of each display board. Normally, the first line will be address 1 **Ad 01**, second line address 2 **Ad 02**, etc.

Depending on the sport, this setting can be important to have the serial data of your timing device displayed correctly. Please also refer to the manual of your timing device concerning the setting for the display board for your sport.

4 Operation of the System

Timing with false start contact mats:

- Input ID numbers of each course and confirm each number with green or red <OK>
- Both climbers have to stay with one leg on the start contact mat
- For each course the Timy2 display shows a bar in the lower part of the display and if both climbers are on the contact mat it shows ready
- Press the <F1> key to activate the timing mode. The display shows now "sharp" and the timing is ready for the start.
- Press the push button that is connected to the Startbeep STB1 to start the race
- The printer shows the start time of each course as well as the time of day for the start impulse and each start.
- In case of a false start the Timy2 beeps three times and the start time is shown with a minus for the false start course. In the display it shows "FS" for the competitor that made the false start. The corresponding display board also shows "FS".
- If you have a regular start and the two climbers reach the finish, the time is indicated at the Timy2 display and at the display boards.
- To start a new pair of climbers input the new start numbers and continue as described before

Clear a start:

- In case you have to restart the climbers press <CLR> and confirm with <F0>

Subject to changes

Copyright by

ALGE-TIMING GmbH
Rotkreuzstr. 39
6890 Lustenau / Austria
www.alge-timing.com