

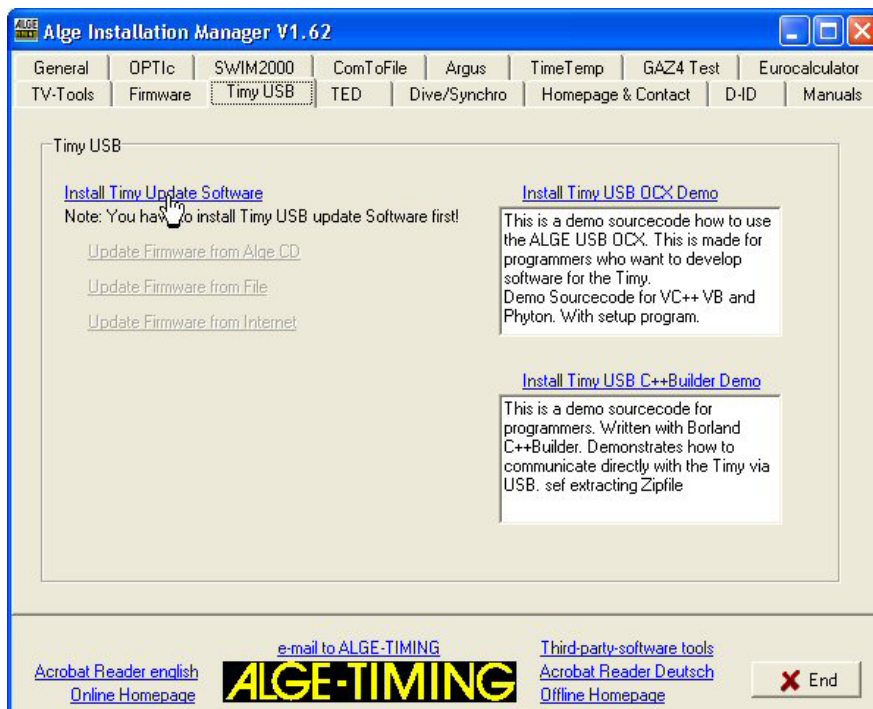
Timy USB update

Note: You should install Timy update software **BEFORE** connecting the Timy.

1. Insert your **ALGE** CD into your computer. If auto play is enabled, the installation manager should appear.
2. Click on Timy USB



3. If you do not already have installed the update software, click “install Timy update software” and follow the setup procedure as described below. Otherwise continue at point 13.



4. Click next.



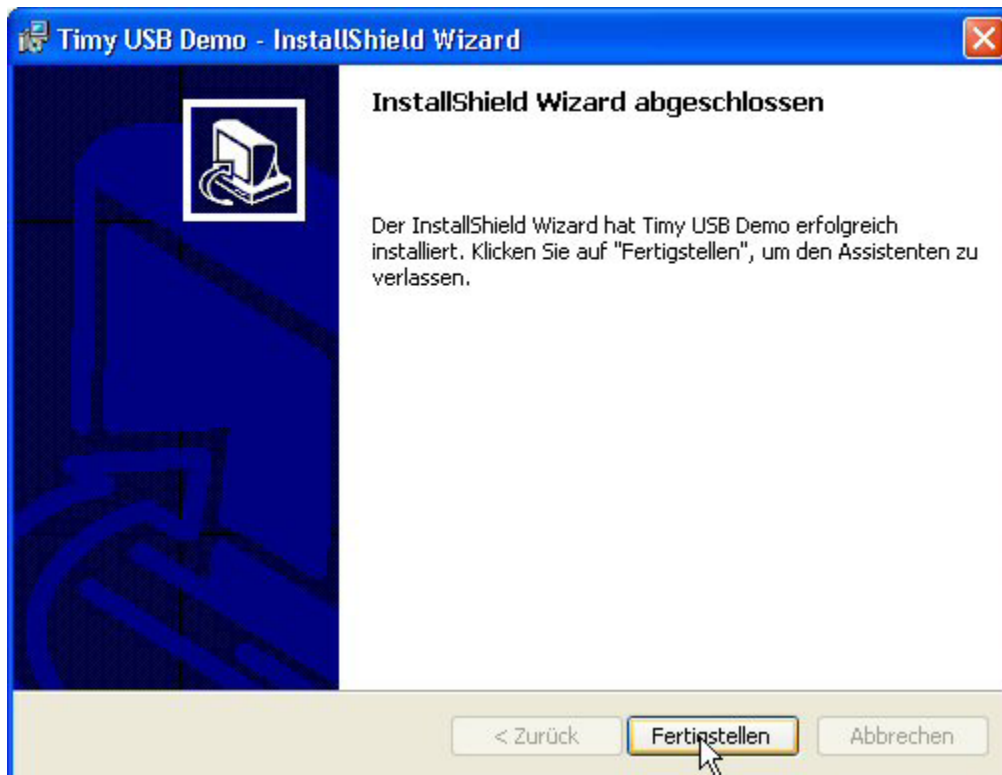
5. Click next.



6. Click next.



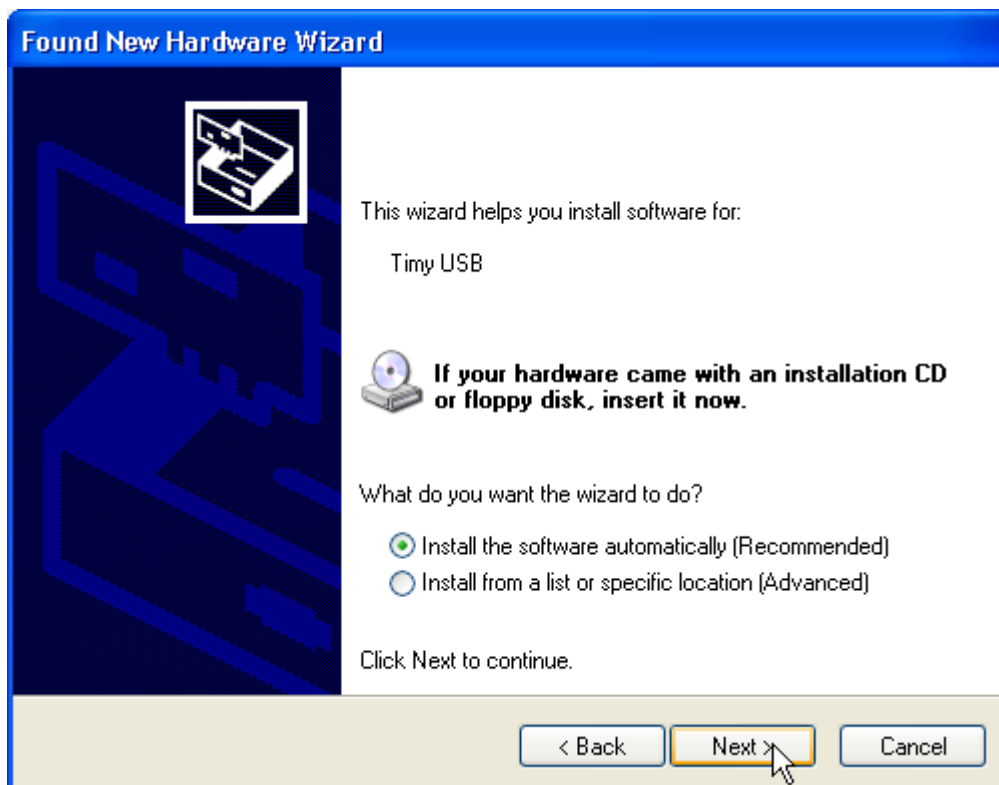
7. Click finish. The update software is now installed. Finish the install manager and take out the CD.



8. Connect Timy to USB and switch it on. Please wait until windows has finished searching for the driver. The following picture should appear. Click “No, not yet” and next. (only Windows XP, Win98/ME/2000 will install driver automatically)



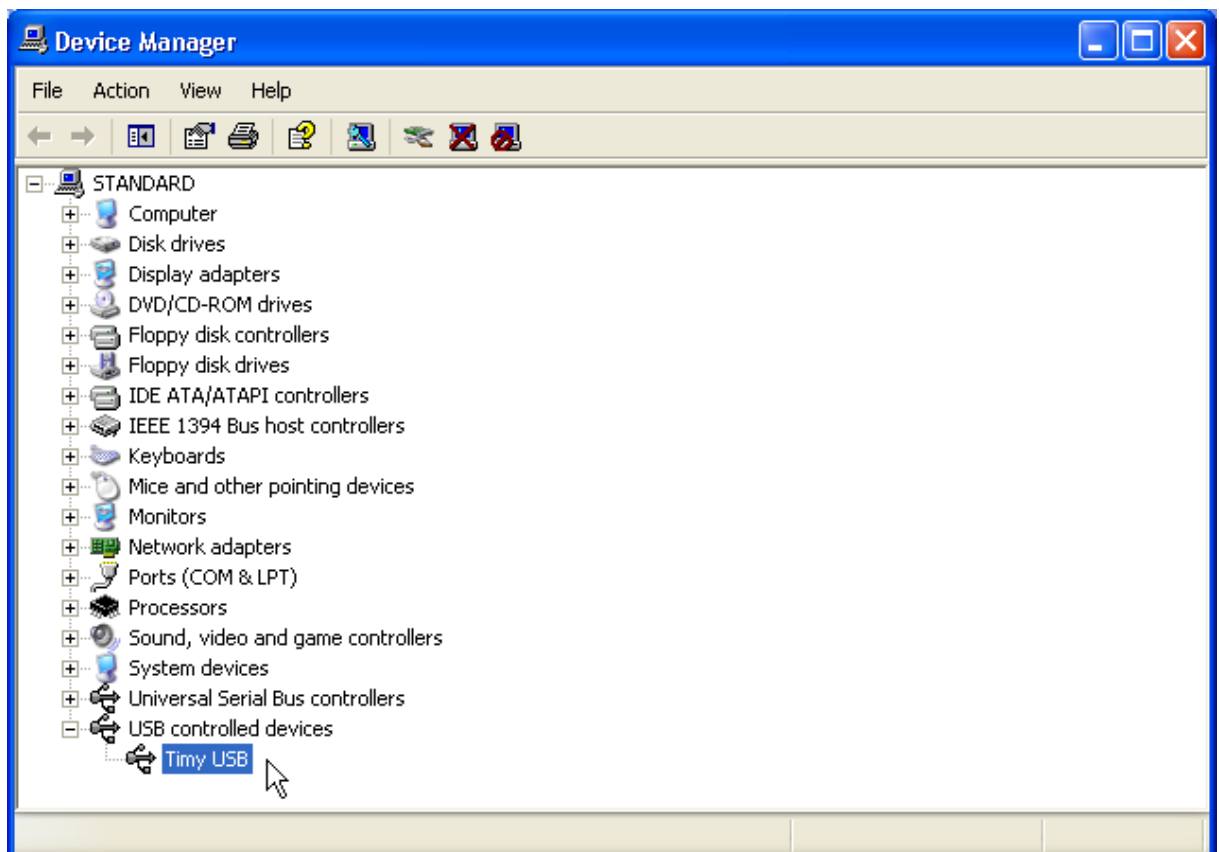
9. Click next



- Click finish. Note: If you connect the Timy to another USB port, you have to repeat this procedure from point 8.-10.



- You can check the correct driver installation at: Start/settings/control panel/system/hardware/device manager.

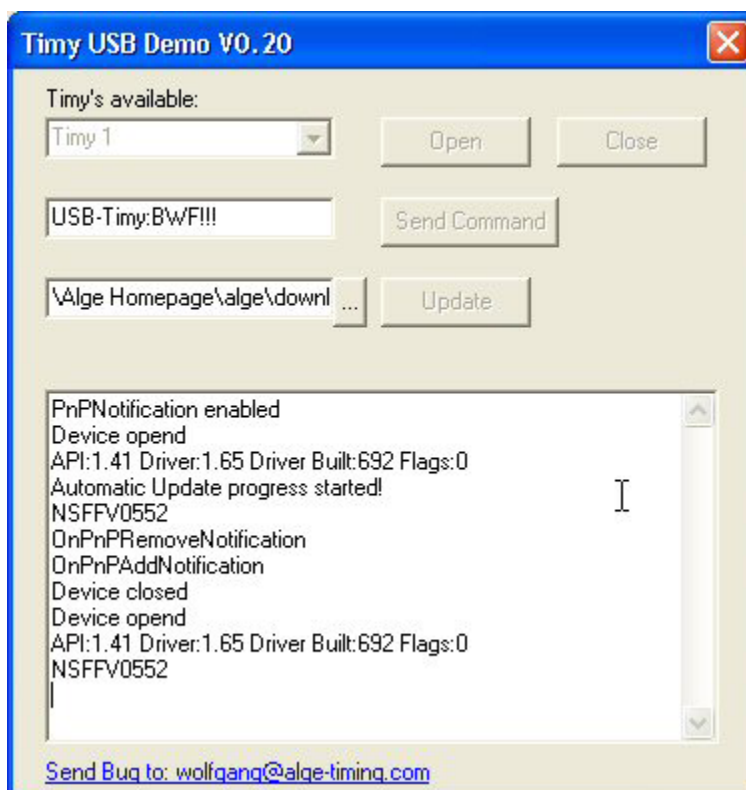


12. reinsert your **ALGE** CD into your computer.

13. Click on Timy USB.



14. Click on “Update Firmware from **ALGE** CD”. Timy Update Software should fully automatic start and update the Timy. If you do not use the Timy with external power, you have to switch it on again after it switched off automatically. Please wait for at least 2 minutes until the update procedure is finished.



Install the latest firmware from the ALGE Homepage:

1. Insert the **ALGE** CD into your computer.
2. Click on Timy USB.
3. Make sure you are connected to the internet. Click on “Update firmware from **ALGE** CD”. The Timy update software should start and update the Timy fully automatic. If you do not use the Timy with external power, you have to switch it on again after it switched off automatically. Please wait for at least 2 minutes until the update procedure is finished.

Notes:

The source code of this Timy update software is available on our homepage. So it should be very easy to include the Timy USB interface into a 3rd party software.